

NOTES:

1. TORQUE RATINGS, Nm :

PART NUMBER	SYMMETRIC TORQUE
QM7D-1023-02L	0.2
QM7D-1023-05L	0.5
QM7D-1023-07L	0.7
QM7D-1023-09L	0.9

PART NUMBER	ASYMMETRIC CW TORQUE	ASYMMETRIC CCW TORQUE
QM7D-2023-07L	0.7	0.4
QM7D-2023-09L	0.9	0.55
QM7D-2023-11L	1.1	0.7
QM7D-3023-07L	0.4	0.7
QM7D-3023-09L	0.55	0.9
QM7D-3023-11L	0.7	1.1

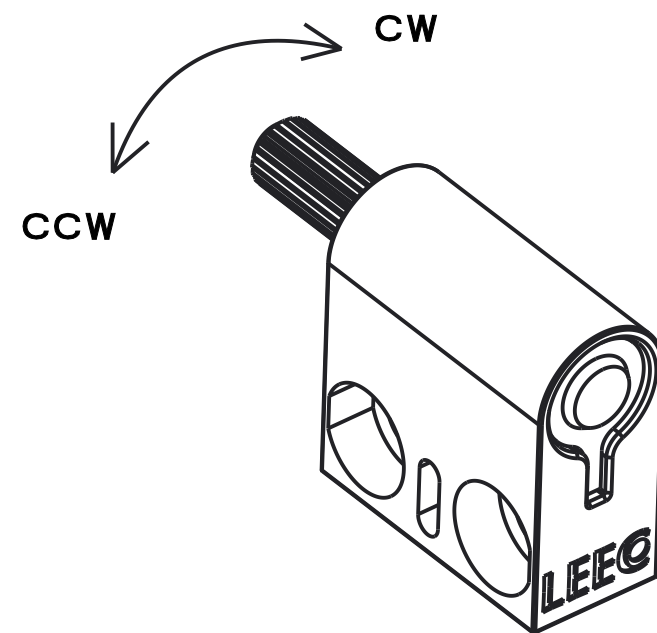
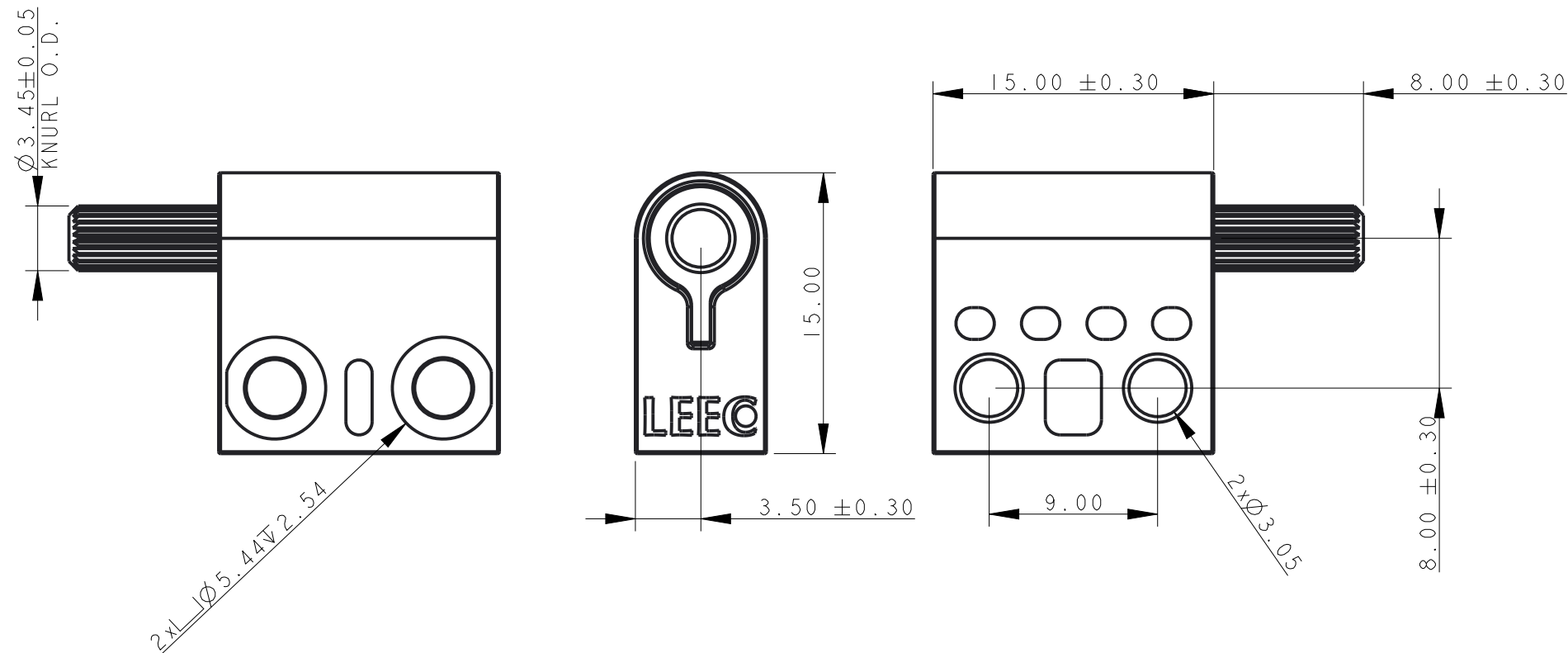
2. CYCLE LIFE:

WITHIN 25,000 CYCLES STATIC TORQUE STAY WITHIN $\pm 20\%$ OF TORQUE SPECIFICATION.

3. FINISH: NATURE

4. 360 DEGREE SHAFT ROTATION

5. FOR ASSEMBLY METHOD, PLEASE REFER TO THE THIRD PAGE.



METRIC(MM)	[ENGLISH] (IN)	LEEEO		DWG NO.		
0-3 ± 0.15	0-0.118 ± 0.006			QM7D-x023-xxL		
3-10 ± 0.20	0.118-0.394 ± 0.008	TITLE				
10-30 ± 0.25	0.394-1.181 ± 0.010	QM7D LEFT				
30-50 ± 0.30	1.181-2.000 ± 0.012	APPROVED	DRAWN	MATERIAL		
50-100 ± 0.40	2.000-4.000 ± 0.016	JLIU	BCHEN	STEEL & ZINC		
100-200 ± 0.50	4.000-8.000 ± 0.020	SHEET 1 OF 1		SCALE: 3.000	REV	
<small>PROPRIETY ITEM - ALL INFORMATION DISCLOSED HEREON IS CONFIDENTIAL AND ALL RIGHTS PATENT AND OTHERWISE ARE RESERVED BY LEEEO TECHNOLOGIES CORPORATION</small>				A3		

NOTES:

1. TORQUE RATINGS, Nm :

PART NUMBER	SYMMETRIC TORQUE
QM7D-1023-02R	0.2
QM7D-1023-05R	0.5
QM7D-1023-07R	0.7
QM7D-1023-09R	0.9

PART NUMBER	ASYMMETRIC CW TORQUE	ASYMMETRIC CCW TORQUE
QM7D-2023-07R	0.7	0.4
QM7D-2023-09R	0.9	0.55
QM7D-2023-11R	1.1	0.7
QM7D-3023-07R	0.4	0.7
QM7D-3023-09R	0.55	0.9
QM7D-3023-11R	0.7	1.1

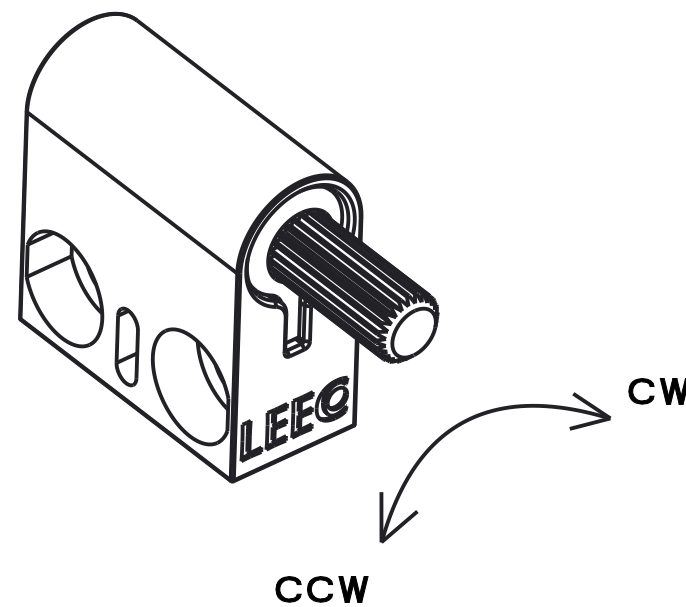
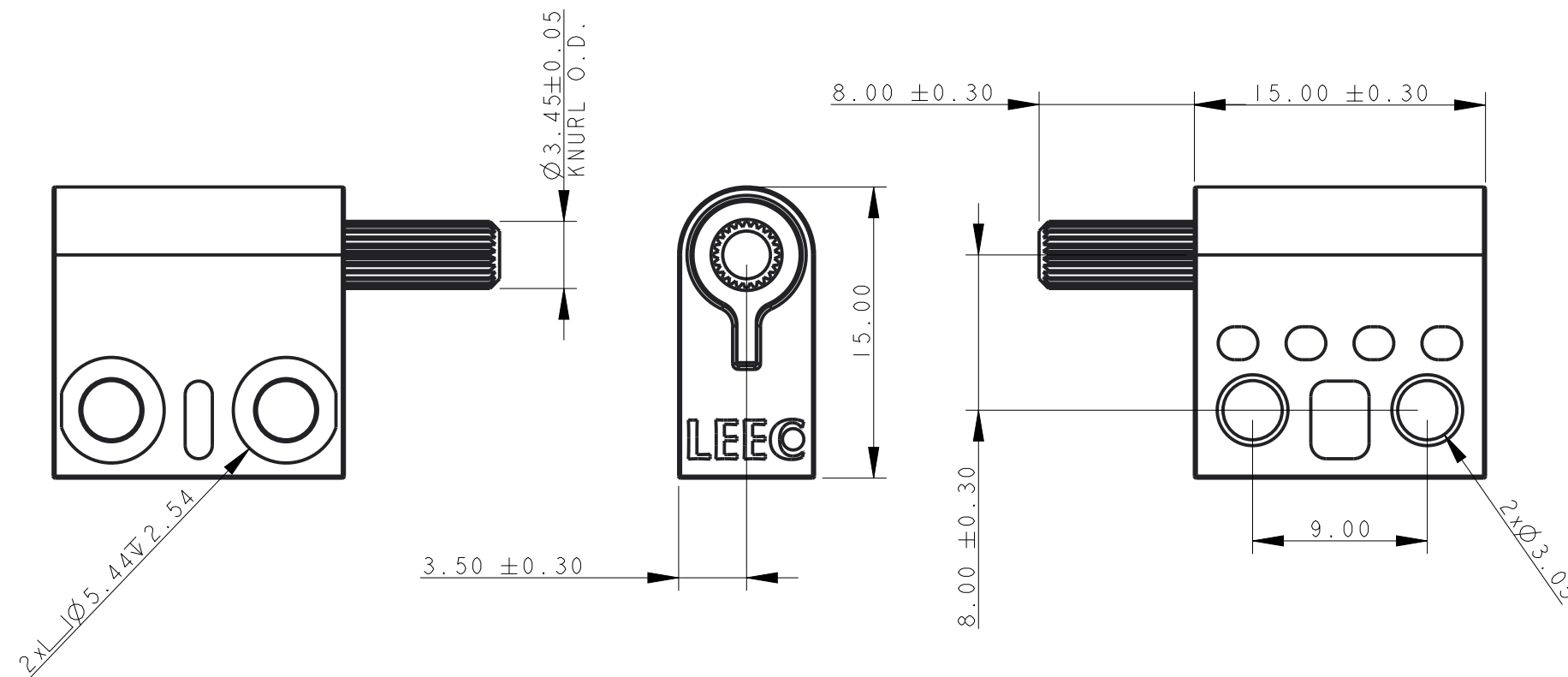
2. CYCLE LIFE:

WITHIN 25,000 CYCLES STATIC TORQUE STAY WITHIN $\pm 20\%$ OF TORQUE SPECIFICATION.

3. FINISH: NATURE

4. 360 DEGREE SHAFT ROTATION

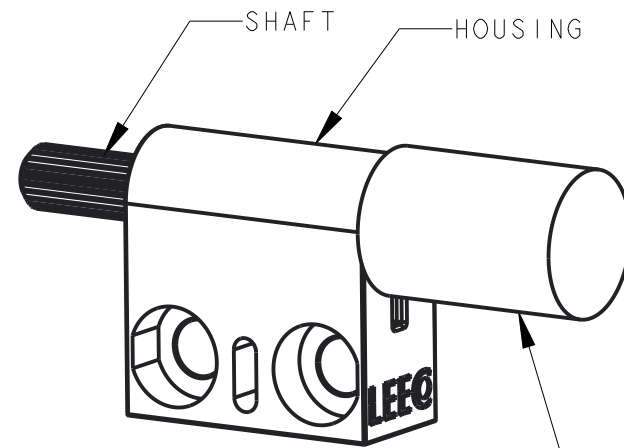
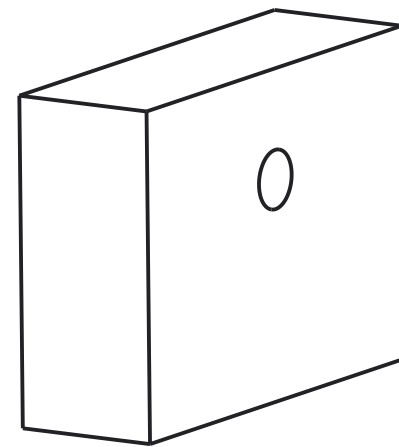
5. FOR ASSEMBLY METHOD, PLEASE REFER TO THE THIRD PAGE.



METRIC(MM)	[ENGLISH] (IN)	LEEEO		DWG NO.		
0-3 ± 0.15	0-0.118 ± 0.006			QM7D-x023-xxR		
3-10 ± 0.20	0.118-0.394 ± 0.008	TITLE				
10-30 ± 0.25	0.394-1.181 ± 0.010	QM7D RIGHT				
30-50 ± 0.30	1.181-2.000 ± 0.012	APPROVED	DRAWN	MATERIAL		
50-100 ± 0.40	2.000-4.000 ± 0.016	JLIU	BCHEN	STEEL & ZINC		
100-200 ± 0.50	4.000-8.000 ± 0.020	SHEET 1 OF 2		SCALE: 3.000	REV	
<small>PROPRIETY ITEM - ALL INFORMATION DISCLOSED HEREON IS CONFIDENTIAL AND ALL RIGHTS PATENT AND OTHERWISE ARE RESERVED BY LEEEO TECHNOLOGIES CORPORATION</small>				A3		

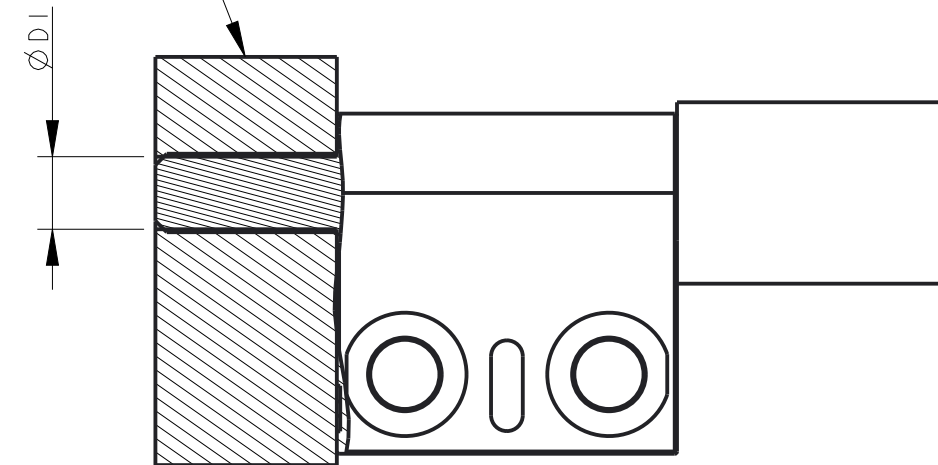
INSTALLATION TIP:

THIS INSTALLATION RAM MUST
PRESS BOTH HOUSING & SHAFT
AT SAME TIME



RAM, MINIMUM DIAMETER IS $\varnothing 9.0\text{MM}$

CUSTOMER MATERIAL



CUSTOMER INSTALLTION GEOMETRY	
CUSTOMER MATERIAL	$\varnothing DI$
ZINC ALLOY	3.25 ± 0.03
ALUMINUM	3.28 ± 0.03
STEEL	3.32 ± 0.015

METRIC(MM)	[ENGLISH] (IN)	LEEEO		DWG NO.		
0-3 ± 0.15	0-0.118 ± 0.006			QM7D-x023-xxR/xxL		
3-10 ± 0.20	0.118-0.394 ± 0.008	TITLE			QM7D	
10-30 ± 0.25	0.394-1.181 ± 0.010	APPROVED	DRAWN	MATERIAL		
30-50 ± 0.30	1.181-2.000 ± 0.012	JLIU	BCHEN	STEEL & ZINC		
50-100 ± 0.40	2.000-4.000 ± 0.016	SHEET 2 OF 2		REV	A3	
100-200 ± 0.50	4.000-8.000 ± 0.020			SCALE: 3.000		
<small>PROPRIETY ITEM - ALL INFORMATION DISCLOSED HEREON IS CONFIDENTIAL AND ALL RIGHTS PATENT AND OTHERWISE ARE RESERVED BY LEEEO TECHNOLOGIES CORPORATION</small>						